

Product Brochure For S641

SJ-24D - Bead Roller

1.2mm Mild Steel Thickness Capacity & 460mm Throat Depth
 Includes 7 Sets Of Rolls, Now Includes Shearing Rolls

Ex GST
\$390.00

Inc GST
\$429.00



ORDER CODE:	S641
MODEL:	SJ-24D
Machine (Type):	Bead Roller
Mild Steel - Thickness Capacity (mm / Gauge):	1.2 / 18
Aluminium - Thickness Capacity (mm / Gauge):	1.6 / 16
Throat Depth Maximum (mm):	460
Roll Diameter (mm):	52
Output Drive Speed (rpm):	~
Motor Power (kW / hp):	~
Voltage / Amperage (V / amp):	~
Nett Weight (kg):	46



Description

The Metalmaster SJ-24D Bead Roller is perfect for the automotive enthusiast starting out in repairing or reproducing car panels, or for anyone wanting to strengthen automotive body panels, roofs, seals or even guards. Constructed from heavy-duty plate steel, the SJ-24D Bead Roller can handle up to 1.2mm mild steel sheet metal at a generous 460mm throat depth.

This bead roller is manually gear driven by a hand crank that drives both the bottom and top bead rolls simultaneously. The 25mm drive-shafts are supported in quality bronze bearing bushes that incorporates greasing nipples to ensure smooth rolling operation.

The SJ-24D also includes 7 sets of the most commonly used rollers required by any metal forming automotive enthusiast or professional - 1/4", 3/8", 1/2" bead rolls, 1/2", 1/16", 1/8" flange rolls and a shearing roll set.

Features

- 1.2mm mild steel capacity for bead & flange rolls
- 1.0mm mild steel capacity for shearing rolls
- Heavy duty steel construction
- Strengthened frame with 16mm steel
- Strengthened stand with 88mm steel pipe
- Ø25mm drive shafts
- Ø22mm spigot for mounting rollers
- Ø54mm bead rollers
- Gear driven system

Includes

- 7 Sets of rolls with Ø22mm bore:
- 1/4" (6.35mm) single bead roll set
- 3/8" (9.5mm) single bead roll set
- 1/2" (12.7mm) single bead roll set
- 1/16" (1.6mm) flange roll set
- 1/8" (3.2mm) flange roll set
- 1/4" (6.35mm) flange roll set
- Shearing roll set

Product Brochure For S641

Specific Features



Left View



Side View



Left Side View



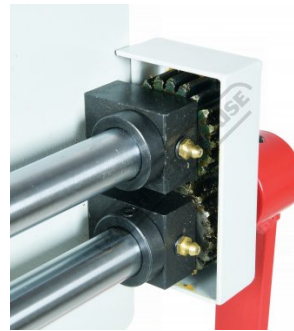
Rear View



Top Roll Pressure Adjustment Handle



Manual Crank Handle



Gear Driven Rollers



Rolls Stored on Stand



16mm Plate Steel



Shown with Shearing Dies



Shown With 1/2" (12.7mm) Beading Rolls



22mm Spigot for Mounting Rollers



Includes 7 Sets of Rolls



Roll Sets Top View



Rolls Sets Rear View



Shearing Rolls

Product Brochure For S641

sales@machineryhouse.com.au
 www.machineryhouse.com.au



1/16 Inch (1.6mm) Flange Rolls



1/8 Inch (3mm) Flange Rolls



1/4 Inch (6.35mm) Flange Rolls



1/4 Inch (6.35mm) Beading Rolls



3/8 Inch (9.5mm) Beading Rolls



1/2 Inch (12.7mm) Beading Rolls

Recommended Accessories

K140

Bead Roller - Motorised Variable Speed



S641F

Adjustable Material Guide Fence



S641M

Bead Roller Motor Kit - 200W Variable Speed



S6411

Forming Bead Roller Kit



Product Brochure For S641

sales@machineryhouse.com.au
www.machineryhouse.com.au

S6412

Round Over Bead Roller Sets

