

Product Brochure For S997

TP15-150.4000 - 15° Top Punch Pressbrake Tooling

150mm High x 4000mm Long
 Suits MetalMaster, Amada & European Pressbrakes

| | |
|-------------------|-------------------|
| Ex GST | Inc GST |
| \$2,540.00 | \$2,794.00 |

| | |
|-------------|---------------|
| Order Code: | S997 |
| Model: | TP15-150.4000 |
| Type: | 15° Top Punch |
| Size (mm): | 150 x 4000 |



Description

Precision Pressbrake Punch made from chromium-molybdenum high strength steel and heat treated for long term durability.

Single knife punch designed for acute angle return bends including catering profiles

Nose Angle - 15 Degrees
 Nose Radius - 1.6mm
 Total Height - 150mm
 Shoulder height - 120mm
 Max. Tonnage - 400kN/m
 Length - 4000mm

Suits MetalMaster, Amada & European Pressbrakes

Specific Features



S997

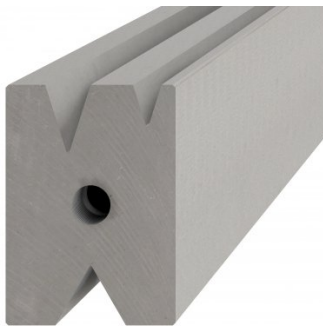
Recommended Accessories

S997A
60mm Die Block Pressbrake
Tooling

S997B
60mm Die Rail Pressbrake
Tooling

S908G
Hydraulic NC Pressbrake

S908GL
Hydraulic NC Pressbrake



S910G
Hydraulic NC Pressbrake

