

## TM62010SV-01 - BuildPro Individual Plate - Standard Finish

Reversible Table Plates  
 1000 x 160mm (LxW)

**Ex GST**  
**\$370.00**

**Inc GST**  
**\$407.00**



ORDER CODE:	W07760
MODEL:	TM62010SV-01
Type:	BuildPro & Individual Plate
Table Height with Stand (mm):	~
Suits Table Size:	~
Material Finish:	Standard Finish
Clamping Capacity:	~
Locking Handle - Pivot Movement:	~
Clamp Bar - Pivot Movement:	~
Plunger Travel (mm):	~
Throat Depth (mm):	~
Opening (mm):	~
Size:	1000 x 160 x 16mm
Quantity Per Pack (No.):	1
Thread:	~
Number of Holes (No.):	~
Slot Length (mm):	~
Magnet Clamp Angle (deg):	~
Pull Force (kg):	~
Clamping Force (kg):	~
Suits:	~
Over all Length:	~
Nett Weight (kg):	18

**BuildPro™**



### Description

NEW REVERSIBLE SELF-LOCATING TABLE PLATES!

Use these Individual Plates to extend the length or width of your BuildPro® Welding Table. Attach Plates using BuildPro® Riser Blocks, or Connector Plates.

Use individual plates to extend the length or width of the BuildPro® Table.

BuildPro® Plates are precision ground steel, .625" thick.

The BuildPro's plate, slot, and hole system provides unlimited options in fixturing.

The very practical, modular design of the BuildPro® Table makes it easy to set-up and tear down for job at hand, big or small. Save time and money by holding, positioning and locating quickly and easily with a wide variety of BuildPro® clamps and accessories.

All BuildPro® Tables have 16mm thick steel plate with Ø16mm holes in a 50mm grid pattern. All tables, except BuildPro® MAX, have 40mm slots between plates.

### Features

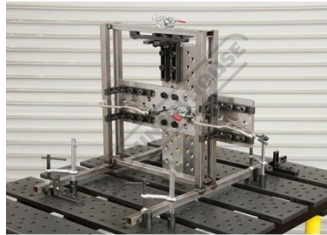
- Standard material finish
- Ø16mm holes
- 16mm plate thickness
- 1000 x 160mm Individual plate
- Ø22mm plate mounting holes, will require additional locating bushes & cap screws

Product Brochure For W07760

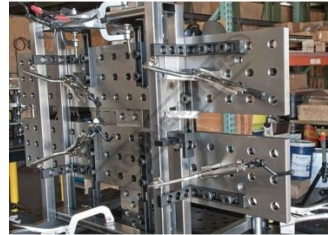
**Specific Features**



Use to Extend the Length or Width of the BuildPro Table



Precision Ground Steel



The BuildPro Plate Slot and Hole System Provides Unlimited Options in Fixturing

**Recommended Accessories**

**W07755**  
 BuildPro Fixturing Plate



**W07756**  
 BuildPro Fixturing Plate



**W07762**  
 BuildPro Individual Plate -  
 Standard Finish



**W07763**  
 BuildPro Individual Plate -  
 Nitrided Finish



**W08042**  
 BuildPro Ball Lock Bolt



**W08043**  
 BuildPro Ball Lock Bolt



**Packet  
 of 10**

**W08046**  
 BuildPro Ball Lock Bolt



**W08047**  
 BuildPro Ball Lock Bolt



**Packet  
 of 10**

Product Brochure For W07760

W08048  
BuildPro Ball Lock Bolt



W08049  
BuildPro Ball Lock Bolt



Packet  
of 10

W08000  
BuildPro Rest Button



W08010  
BuildPro V-Block



W08014  
BuildPro V-Block



W08016  
BuildPro Aluminium V-Block



PACK  
of 2

W08012  
BuildPro V-Block Spacer



W08024  
BuildPro Ecentric Pad



W08026  
BuildPro Ecentric Pad



W08030  
BuildPro Magnetic Rest Button



W08085  
BuildPro Right Angle Bracket



W08086  
BuildPro Right Angle Bracket



Product Brochure For W07760

**W08087**  
 BuildPro Right Angle Bracket



**W08088**  
 BuildPro Right Angle Bracket



**W08100**  
 BuildPro Economy Stop & Clamping Square



**W08101**  
 BuildPro Economy Stop & Clamping Square



**W08102**  
 BuildPro Economy Stop & Clamping Square



**W08111**  
 BuildPro Malleable Cast Iron Clamping Square



**W08110**  
 BuildPro Malleable Cast Iron Clamping Square



**W08092**  
 BuildPro Heavy Duty Riser Block



**W08095**  
 BuildPro Heavy Duty Riser Block



**W08096**  
 BuildPro Heavy Duty Riser Block

