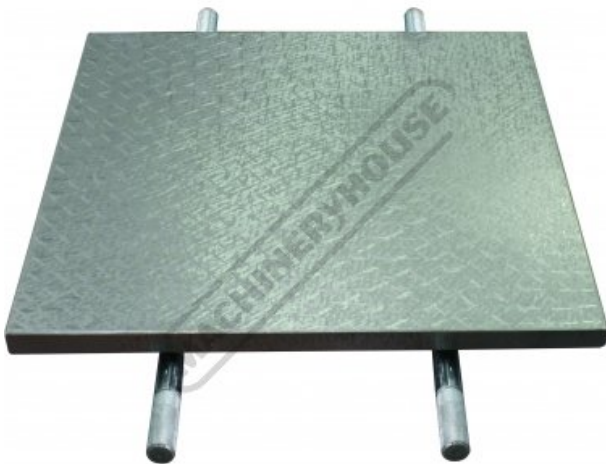


M710 - Cast Iron Surface Plate

400 x 400 x 55mm

Ex GST	Inc GST
\$390.00	\$429.00

ORDER CODE:	M710
Surface Material Type:	Cast Iron
Surface Plate (L x D x H) (mm):	400 x 400 x 55
Stand (L x D x H) (mm):	~
Nett Weight (kg):	38



Description

A quality surface plate for any workshop or model engineer. Made from high quality close grained cast iron which has been stress relieved against distortion and precisely finished by planing and hand scraping. Overall dimensions are 400 x 400 x 55mm thick.

Features

- Close grained, stress relieved cast iron
- Precisely finished by planing and hand scraping
- Deep cross ribbed construction maintaining rigidity & accuracy
- Accuracy to standard DIN876/1
- Includes lifting handles & cover for protection

Product Brochure For M710

Specific Features



Left View

Protective Cover

Shown with Surface Marking Out Gauge

Shown with Vernier Height Gauge

Recommended Accessories

M053
Surface Marking Out Gauge

M700
Height Gauge

M704
Digital Height Gauge

Q2105
Digital Height Gauge



Q2106
Digital Height Gauge

Q647
Precision Steel Square

