

TP15-150.3200 - 15° Top Punch Pressbrake Tooling

150mm High x 3200mm Long
 Suits MetalMaster, Amada & European Pressbrakes

Ex GST	Inc GST
\$1,990.00	\$2,189.00

Order Code:	S996
Model:	TP15-150.3200
Type:	15° Top Punch
Size (mm):	150 x 3200



Description

Precision Pressbrake Punch made from chromium-molybdenum high strength steel and heat treated for long term durability.

Single knife punch designed for acute angle return bends including catering profiles

Nose Angle - 15 Degrees
 Nose Radius - 1.6mm
 Total Height - 150mm
 Shoulder height - 120mm
 Max. Tonnage - 400kN/m
 Length - 3200mm

Suits MetalMaster, Amada & European Pressbrakes

Product Brochure For S996

Specific Features



S996

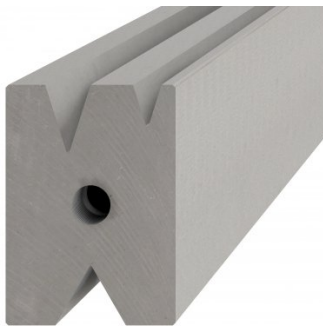
Recommended Accessories

S996A
 60mm Die Block Pressbrake Tooling

S996B
 60mm Die Rail Pressbrake Tooling

S906G
 Hydraulic NC Pressbrake

S906GL
 Hydraulic NC Pressbrake



S908G
 Hydraulic NC Pressbrake

S908GL
 Hydraulic NC Pressbrake

