

60215 - Steel Offset Fabricated Bench Vice - Right Hand

200mm Jaw Width
 225mm Jaw Opening

Ex GST	Inc GST
\$1,300.00	\$1,430.00

ORDER CODE:	V071
Model:	60215
Type:	Offset - Right Hand
Jaw Width (mm):	200
Jaw Opening (mm):	225
Overall Length (Closed Jaws) (mm):	690
Overall Width (mm):	377
Overall Height (mm):	245
Nett Weight (kg):	60



Description

Manufactured from steel plate and designed for heavy duty work. Long life is assured with replaceable case hardened jaws

Australian made Dawn vices have a 25-year warranty against faulty materials and workmanship, does not include wear and tear

Features

- Replaceable case hardened jaws
- Replaceable nut and screw
- Corrosive resistant screw and handle
- Precision machined bearing surface ensures smooth operation

Product Brochure For V071

Specific Features



Pipe Vice Jaws



Offset Vice Jaws



Vertical Work Without Obstruction



Side View Vertical Work Without Obstruction



Side View



Right Side View

Recommended Accessories

V0532

Aluminium Magnetic Soft Jaws

V0539

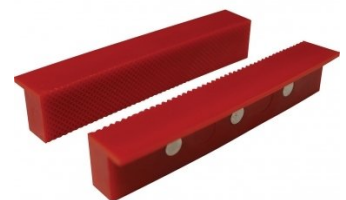
Aluminium Magnetic Soft Jaws

V0536

Aluminium Magnetic Soft Jaws

V0542

Plastic Magnetic Soft Jaws



Product Brochure For V071

sales@machineryhouse.com.au
www.machineryhouse.com.au

V0546

Plastic Magnetic Soft Jaws



V052

Vice Brake Bender - Suits
Bench Vices

