

## IWB-12P1 - Industrial Work Bench Package Deal

1200 x 750 x 1725mm  
 1000kg Table Top Load Capacity



### Package Deal

Ex GST                      Inc GST  
**\$520.00                      \$572.00**

Package Contents	1 x IWB-12P1 Industrial Work Bench	<b>\$352.00</b>
	1 x IBP-12 Industrial Backing Panel - Bench Mount	<b>\$220.00</b>
<b>Normal Price (Inc):</b>		<b>\$572.00</b>

ORDER CODE:	K041
MODEL:	IWB-12P1
Bench Material (Type):	Steel with Laminated Top & Package Deal
Table Top Load Capacity (kg):	1000
Number of Drawers (No.):	Optional
Table Dimensions (L x W x H) (mm):	1200 x 750 x 900
Nett Weight (kg):	99



### Description

Heavy Duty steel construction. Great heavy duty work bench for the workshop or garage.

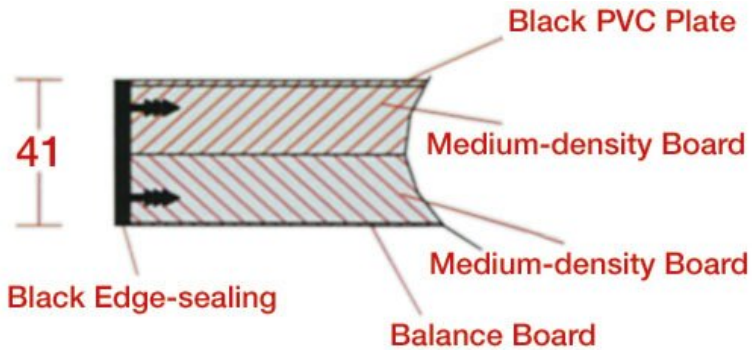
The IWB-12 Industrial-duty work bench has a huge load capacity of 1000kg (1 Tonne). Constructed from heavy duty powder coated steel the multi-functional commercial frame provides maximum rigidity for the most demanding industrial applications. Finished with a rounded PVC edge the 41mm medium density laminated bench top will withstand heavy loads.

The louvred backing panel which incorporates a fixed top and bottom shelf is a great addition. A complete range of tool hooks, hangers and storage buckets are also available making storing and locating your tools much easier.

This great work bench package solution can be fitted with a range of optional accessories like plastic storage buckets, hooks & holders.

### Features

- IWB-12 Work Bench:
  - Heavy duty steel fabricated frame with powder coated finish for maximum rigidity
  - Top Surface is 2mm high density laminate over 41mm thick medium density chipboard with bull nosed hard PVC edge
  - Easy to use screw out adjustable feet
  - High quality laminated medium density chipboard with a 1000kg load capacity, rounded PVC edge and also resistant to alkali and oil
- IBP-12 Backing Panel:
  - Backing panels can be assembled to suit your requirements, either top or bottom positions
  - Square holes suits optional hooks & holders
  - Louvre slots to suit optional buckets
  - Bottom & top tray shelves - for additional storage
  - 3 Vertical supports - with adjustable clamps to mount to work bench
- Please Note: Table top load capacity is calculated on even weight distribution over entire table top area.



**Specific Features**



Workbench



Backing Panel



Adjustable Feet



Rounded-bull nosed hard PVC edge



Steel leg bracing



Pegboard Closeup



Bottom Tray



Clamp



Shown Clamped to Optional Table



Top Tray



Shown with all Options

**Recommended Accessories**

A415  
Industrial Work Bench



A416  
Industrial Backing Panel - Bench Mount



A422  
Industrial Under Bench Tooling Cabinet



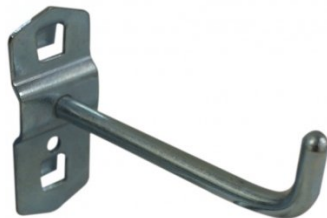
T764  
Industrial Tooling Cabinet



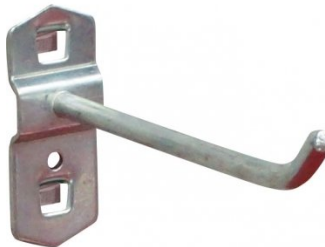
A439  
Hook - Single Prong



A440  
Hook - Single Prong



A4401  
Hook - Single Prong



A441  
Hook - Double Prong

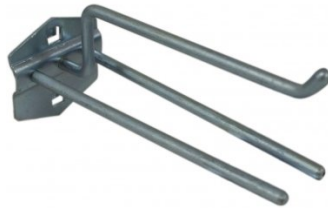


Product Brochure For K041

A442  
 Hook - Double Prong



A444  
 Plier Holder - Triple Prong



A4492  
 Hook - U Shape Holder



A449  
 Hook - U Shape Holder



A4496  
 Round Tool Holder - Loop



A446  
 Holder - Spanner



A448  
 Holder - Screwdriver



A430  
 Plastic Bucket



A432  
 Plastic Bucket



A434  
 Plastic Bucket



A436  
 Plastic Bucket



K029  
 Industrial Work Bench Package Deal



Product Brochure For K041

**K030**  
 Industrial Work Bench Package Deal



**K031**  
 Industrial Work Bench Package Deal



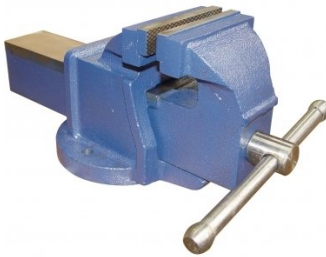
**K035**  
 Industrial Work Bench Package Deal



**A359**  
 Pneumatic Stool



**V088**  
 Cast Iron Bench Vice



**V0914**  
 Steel Offset Fabricated Bench Vice - Right Hand



**V081**  
 Forge Steel Utility Bench Vice with Anvil & Pipe Jaws



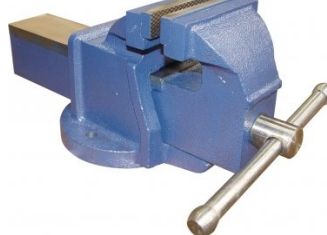
**V069**  
 Steel Offset Fabricated Bench Vice - Right Hand



**V079**  
 Cast Iron Offset Bench Vice - Right Hand



**V089**  
 Cast Iron Bench Vice



**V0915**  
 Steel Offset Fabricated Bench Vice - Right Hand

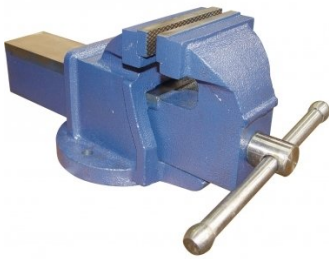


**V0815**  
 Forge Steel Utility Bench Vice with Anvil & Pipe Jaws



Product Brochure For K041

V090  
 Cast Iron Bench Vice



V067  
 Steel Offset Fabricated Bench Vice - Right Hand



V0916  
 Steel Offset Fabricated Bench Vice - Right Hand



V082  
 Forge Steel Utility Bench Vice with Anvil & Pipe Jaws



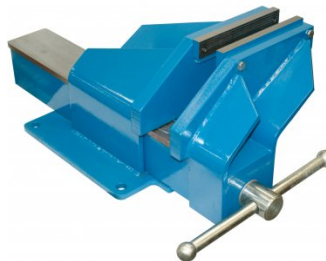
V070  
 Steel Offset Fabricated Bench Vice - Right Hand



V080  
 Cast Iron Offset Bench Vice - Right Hand



V0918  
 Steel Offset Fabricated Bench Vice - Right Hand



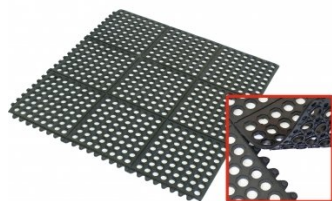
V071  
 Steel Offset Fabricated Bench Vice - Right Hand



M800  
 Rubber Mat - Anti-Fatigue



M805  
 Rubber Mat - Anti-Fatigue



G160  
 Industrial Bench Grinder



G160A  
 Industrial Bench Grinder



Product Brochure For K041

**G157**  
Industrial Bench Grinder with  
Multitool Linisher Attachment



**G155**  
Industrial Bench Grinder



**G156**  
Industrial Bench Grinder with  
Linisher



**G161**  
Industrial Bench Grinder



**D590**  
Medium-Duty Bench Drill - Belt  
Drive



**H820**  
Metric Hex Key Set with T-Bar  
Handle



**H821**  
Imperial Hex Key Set with T-Bar  
Handle



**H822**  
Torx® Key Set with T-Bar  
Handle



**08048**  
Folding Utility Knife



**D1272**  
Metric Precision HSS Drill Set -  
25 Piece



**D1282**  
Imperial Precision HSS Drill Set  
- 29 Piece



**D1285**  
Metric Precision HSS Drill Set -  
51 Piece



Product Brochure For K041

**D1071**  
 HSS Sheet Metal Step Drill Set -  
 3 Piece



**D1051**  
 HSS Countersink Set - 4 Piece



**D1061**  
 HSS Countersink Set 6 Piece



**D508**  
 HSS Industrial Centre Drill Set -  
 5 Piece



**D070**  
 Drill Sharpener



**H880**  
 Dead Blow, Nylon Face  
 Hammer



**H870**  
 Soft Face Hammer



**H875**  
 Soft Face Hammer - 5 piece



**H885**  
 Auto Panel Restoration Kit - DIY



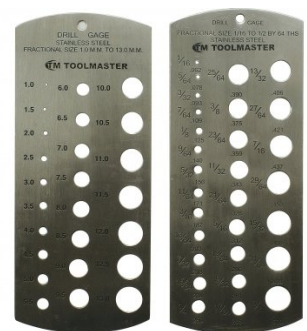
**H886**  
 Auto Panel Restoration Kit -  
 Professional



**H887**  
 Auto Panel Restoration Kit -  
 Master



**M988**  
 Metric & Imperial Drill Gauge





Product Brochure For K041

**Q616**  
 Feeler Gauge Set



**T012**  
 Metric Alloy Steel Tap & Die Set - 32 Piece



**T013**  
 Metric HSS Tap & Die Set - 32 Piece



**T014**  
 Metric Alloy Steel Tap & Die Set - 45 Piece



**T015**  
 Imperial Alloy Steel Tap & Die Set - 45 Piece



**T016**  
 Metric HSS Tap & Die Set - 45 Piece



**T870**  
 Screw Extractor Set - 10 piece



**T119**  
 Metric Thread Restorer File



**T120**  
 Imperial Thread Restorer File



**T100**  
 Metric Thread Repair Kit - 130 Piece



**T116**  
 Imperial Thread Restorer Tap & Die Kit - 26 Piece Set



**T115**  
 Metric Thread Restorer Tap & Die Kit - 15 Piece



Product Brochure For K041

**T117**  
 Metric, UNC, UNF Thread Restorer Tap & Die Kit - 48 Piece



**D108**  
 Metric Carbide Tipped Hole Saw Set



**D102**  
 Metric HSS Hole Saw Set



**F100**  
 Engineers Files, 5 Piece Set - Second Cut



**F120**  
 Engineers File, Flat - Coarse Cut



**F121**  
 Engineers File, Flat - Second Cut



**F122**  
 Engineers File, Flat - Smooth Cut



**F124**  
 Engineers File, Half Round - Coarse Cut



**F125**  
 Engineers File, Half Round - Second Cut



**F126**  
 Engineers File, Half Round - Smooth Cut



**F127**  
 Engineers File, Round - Coarse Cut



**F128**  
 Engineers File, Round - Second Cut



Product Brochure For K041

**F129**  
 Engineers File, Round - Smooth  
 Cut



**F160**  
 Slapping File - Second Cut



**F150**  
 Flexible Body File Holder



**F155**  
 Flexible Body File



**F156**  
 Flexible Body File



**P112**  
 Hole Punch Set



**S203**  
 180° Straight Edge/Seaming  
 Plier



**S205**  
 90° Edge/Seaming Plier



**S200**  
 Joggler & Punch Plier



**P368**  
 Automatic Centre Punch



**P367**  
 Centre Punch Set - 3 Piece



**P365**  
 Pin Punch Set - 6 Piece



Product Brochure For K041

**P363**  
 Cold Chisel Set - 3 Piece



**P364**  
 Punch & Cold Chisel Set - 14 Piece



**N001**  
 Nut & Blind Riveter Set - 130 Piece



**P350**  
 Letter Punches



**P351**  
 Number Punches



**P354**  
 Letter Punches



**P355**  
 Number Punches



**W103**  
 Engineers Chalk Marker- 50 Splits



**W104D**  
 White Liquid Paint Marker - Valve Action



**W104E**  
 Yellow Liquid Paint Marker - Valve Action



**W104B**  
 Silver Streak - Welders Pencil



**W104A**  
 Orange Trades Marker Refills - All Purpose



Product Brochure For K041

**W104**  
 Trades Marker - All Purpose



**W104G**  
 Silver Streak Refills - Round Metal Marker



**W104C**  
 Silver Streak - Round Metal Marker



**D063**  
 Sheet Metal Deburring Tool



**D060**  
 Deburring Tool - Telescopic Shaft



**D065**  
 Universal Deburring Tool Set - 23 Piece



**D068**  
 Pipe/Tube Deburring Tool - Internal / External



**B900**  
 Carbide Burr Double Cut Set - Short Series



**B905**  
 Carbide Burr Double Cut Set - Long Series



**M0009**  
 Magnetic Pick Up Tool & Inspection Mirror Set



**L300**  
 Magnetic Swarf Remover



**P020**  
 Hydraulic Chassis Punch Set



Product Brochure For K041

M697

Portable Video Inspection Camera



W112

Micro Welding Steel Clamp Set



W113

Butt Welding Aluminium & Steel Clamp Set



W114

3 Angles Welding Aluminium Clamp Set



S077

Drilling, Tapping & Cutting Tool Lubricant Spray - 400g



S075

Cutting Tool Lubricant Paste - 200g



O043

Rust & Corrosion Preventive - Penetrant & Lubrication



O042

General Purpose Lubricant & Corrosion Inhibitor



O040

Rust & Corrosion Preventive - Penetrant & Lubrication



O044

Rust & Corrosion Preventive - Penetrant & Lubrication



P030

Bush Driver Set - 17 piece



P031

Bearing Race & Seal Driver Set - 10 piece



Product Brochure For K041

**P005**  
Ratcheting Gear Puller Set



**P013**  
Puller Set with Slide Hammer



**P011**  
Hydraulic Gear Puller Kit



**A037**  
Pneumatic Tool Oil



**G076**  
Top Up Pump



**G077**  
Oil Transfer Pump



**G040**  
Oil Transfer Pump



**G065**  
Suction Gun - Oil Transfer



**G070**  
Grease Gun



**G072**  
Grease Gun



**G063**  
Grease Gun



**G074**  
Air Operated Grease Gun



Product Brochure For K041

G066

Air Operated Power Pistol -  
Grease Gun



G068

Battery Operated Grease Gun



G060

Grease Gun



G067

Lithium-ion Battery Operated -  
Grease Gun



G057

Super Blue Complex Grease  
Cartridge



O002

Superdraulic Hi Temp 46  
Hydraulic Oil

