

Product Brochure For S9401S

HG-3206E - Hydraulic Swing Beam Guillotine - Premium

3200 x 6mm Mild Steel Shearing Capacity
 Estun E21S control, Pneumatic Sheet Supports & hardened ballscrew backgauge

Back In Stock Soon

Ex GST

Inc GST

\$29,450.00 \$32,395.00



| | |
|--|--------------------|
| ORDER CODE: | S9401S |
| MODEL: | HG-3206E |
| Shearing Capacity - Mild Steel (mm): | 6 |
| Shearing Capacity - Stainless Steel (mm): | 4 |
| Shearing Length (mm): | 3200 |
| NC Control (Type): | Estun E21S |
| Backgauge (Type): | Ballscrew |
| Backgauge Travel (mm): | 1000 |
| Pneumatic Sheet Supports: | Yes |
| Quick Action Blade Clearance Adjustment: | Yes |
| Strokes / min (SPM): | 16 |
| Blade Angle (deg): | 1° 30 |
| Throat Depth (mm): | 150 |
| Motor Power (kW / hp): | 7.5 / 10 |
| Voltage / Amperage (V / amp): | 415 |
| Floor Space Requirements (L x W x H) (mm): | 4000 x 3500 x 1800 |
| Nett Weight (kg): | 6150 |



Description

METALMASTER Quality Guillotines provide precision shearing capabilities, The Guillotine frames are constructed from rolled, stress relieved solid steel to prevent distortion during the shearing process under extreme continuous loads.

METALMASTER Guillotines are produced in a quality controlled production environment and therefore are able to be manufactured cost effectively, resulting in affordable pricing, representing value for money and a quicker return on investment.

The heavy duty swing beam design features a fixed rake blade specifically developed for shearing material from mild steel through to stainless steel. The blades are made from high tensile tool steel and also provide high resistance to Impact, wear & corrosion.

Features

- Pneumatic operated material sheet supports mounted to rear of machine. This feature assists in shearing thin material to the correct cut length required simply by preventing thinner material flexing and falling below the backgauge prior to shearing.
- Estun E21S controller stores up to 40 unique programs with 25 automatic progressive cutting steps in each individual program, assuring production accuracy & repeatability every time
- Hardened ballscrew backgauge system, simply enter the desired measurement into the Estun E21S controller and press go, the backgauge then will move quickly into the position you have requested. The superior hardened ballscrew system eliminates any backlash that leadscrew type machines produce
- Rapid blade gap adjustment ensuring quick & accurate alteration of blade gap between material changes.
- Automated hydraulic material clamping system designed with individual hold downs along the length of the machine, The individual hold downs are fitted with nylon inserts to protect the material from indentation when clamping.
- Control unit mounted on swivel pendant arm enabling operator easy access, this is very useful when machine is loaded with full length of material.
- Transfer balls inserted into work table allowing larger sheets to be easily positioned to the cut position and squaring arm.
- Top shearing blade has two (2) cutting edges allowing blade rotation.
- Bottom shearing blade has four (4) cutting edges allowing multiple blade rotations.
- The entire steel plate structure of the main frame has been specially prepared to ensure maximum penetration during the welding process. In addition to this the cutting beam has been stress relieved eliminating any distortion after manufacturing.
- Shadow line lighting has been incorporated into the machine frame providing a clear cutting line on the work piece and enabling scribed or marked material to be cut with simplicity as required.
- A heavy duty squaring arm fitted with a graduated rule allows the operator to quickly cut the required size from the front of machine. The squaring arm also assists to align the material square to the cutting blades.
- Sliding rear material chute so scrap material does not build up in the rear of the machine.
- A safety system with photo electric rear guards are fitted to the rear steel side gates ensuring that the machine will be disabled if a person enters rear of machine when in use.

Product Brochure For S9401S

- Mild steel capacity is rated on hot rolled material with 250MPA
- Pre-Commissioning:
 - Guillotine is run & tested prior delivery
 - Hydraulic oil is included with machine

Includes

- Estun E21S Controller on swivel pendant for easy access
- Pneumatic sheet supports
- Mobile foot pedal for "hands free operation"
- Single point rapid blade gap adjustment
- High quality 6CrW2Si blades suitable for cutting stainless steel
- Hardened ballscrew backgauge with 1000mm travel
- Automatic backgauge retract function during cutting
- Swing away backgauge function for cutting long sheets
- Individual hydraulic clamp hold downs with nylon pads
- 150mm throat enables shearing of longer material than 2500mm
- LED Shadow line lighting
- Transfer balls on table
- Heavy duty support arms and squaring arm
- Stroke counter and short stroke adjustment
- Sliding material chute, easily allowing operator to retrieve cut pieces
- Photo electric safety light beams on rear guarding
- Compliant AS/NZS 4024.1 – 2019 Safety of Machinery Series

Specific Features



Sheet supports



Side



Pendant control unit



Estun E21S controller



Mobile foot pedal



Rapid blade clearance adjustment



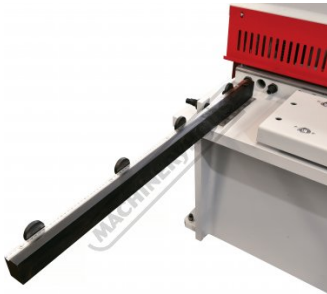
Hydraulic material hold downs



Ball transfer table

Product Brochure For S9401S

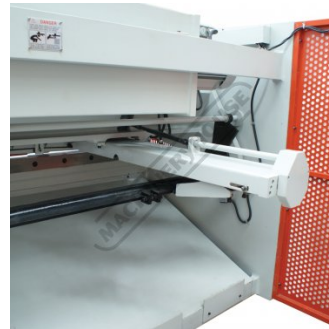
sales@machineryhouse.com.au
 www.machineryhouse.com.au



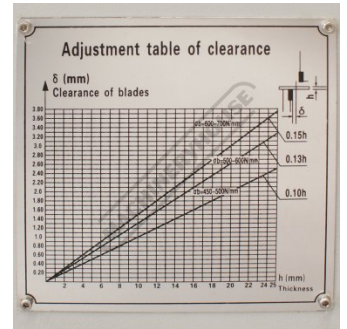
Squaring arm



Rear guarding with safety sensors



1000mm Powered ballscrew back gauge



Blade clearance chart

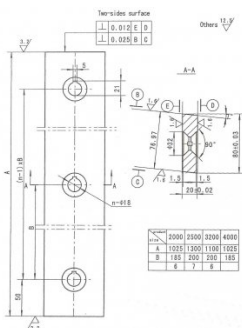


Optional ball transfer table extensions - Shown with different machine

Recommended Accessories

S9987

3200mm Sheet Metal Guillotine Blade Set - 6CrW2Si



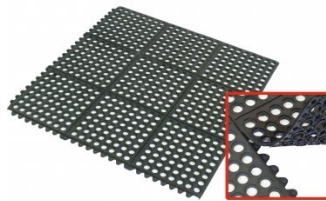
M800

Rubber Mat - Anti-Fatigue



M805

Rubber Mat - Anti-Fatigue



O000

SpillFix Universal Organic Absorbent



Product Brochure For S9401S

O000A
 Natural Zeolite Absorbent



O043
 Rust & Corrosion Preventive - Penetrant & Lubrication



O042
 General Purpose Lubricant & Corrosion Inhibitor



O040
 Rust & Corrosion Preventive - Penetrant & Lubrication



O044
 Rust & Corrosion Preventive - Penetrant & Lubrication



O004
 Superdraulic 46 Hydraulic Oil



O005
 Superdraulic 46 Hydraulic Oil

