

5A-40R - CNC 5 Sided Machining Centre

Please Call



ORDER CODE:	M8830
MODEL:	5A-40R 4+1
X Travel (mm):	410
Y Travel (mm):	610
Z Travel (mm):	510
A Travel (deg):	+30 / -120
B Travel (deg):	~
C Travel (deg):	360
Table Size (mm):	Ø320mm
MAX Workpiece Height (mm):	~
Table Capacity (kg):	200 - Horizontal 100 - Tilting
Spindle - Table (mm):	~
Spindle - Table (mm):	~
Spindle - Table (mm):	~
Spindle Taper:	BT40
Spindle Speed (rpm):	12,000
Spindle Motor (kW):	11
Rapid Traverse (m/min):	X=36, Y=36, Z=30
Guideways:	~
Tool Change:	~
:	~
:	~
:	~
:	~
:	~
Control:	Hartrol Premium 1 Control

Hartford
innovative



Description

- 410, 610, 510mm X, Y, Z travels
- +30 / -120° A Axis travel
- 360° C Axis travel
- Ø360mm table size
- 200/100kg table load capacity
- 36, 36, 30m/min X, Y, Z rapid feed rates
- 12,000 rpm spindle speed
- 11kW spindle power
- BT40 spindle taper
- 24 Tools ATC

CNC Control

- Hartrol Premium 1 Control
- Hartcam 2.5 Conversational Software
- 19" Touch Screen Colour LCD
- Data Server
- On board SSD
- Rigid-synchronised tapping
- Helical interpolation
- High Speed Machining Function
- Ethernet Interface
- USB Port
- Hartrol Enhanced CNC Software
- Spindle Load Monitoring
- Advanced Tool Register
- Advanced Workpiece Co-ordinate System

Features

- 12,000rpm direct drive spindle
- Chip Conveyor
- 20 Bar Through Spindle Coolant System
- Renishaw OPM60 Probing system
- Renishaw OTS Tool setting
- Fully Enclosed Guarding with Door Interlocks

Product Brochure For M8830

- Operator Training
- In House Service and Support Australia Wide

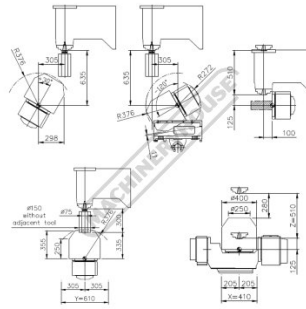
Specific Features



Internal



Hartrol Plus Controls



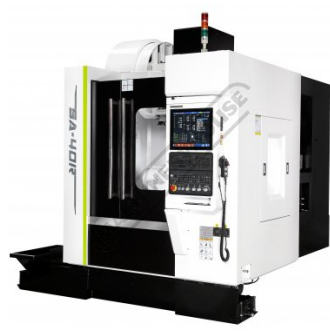
Cutting Range



Front View



Internal View Front



Side View



Internal View