

L103 - Boring Bar with Holder

5/16"
 HSS bit not included

Ex GST	Inc GST
\$35.00	\$38.50

ORDER CODE:	L103
B:	1"
D:	3/4"
L:	9"
L1:	3-3/4"
Toolbit Required:	5/16" (L0004)
Nett Weight (kg):	0.55



Description

NOTE: HSS Tool bits not supplies
 Use 5/16" HSS Tool Bit (L0004)

Features

- Double-ended bars with 45° and 90° angular square holes at either end
- Accurately broached square holes to accept standard high speed steel or carbide tool bits
- Supplied fitted with screws and allen key

Product Brochure For L103

Recommended Accessories

L0004
 High Speed Steel Bits - Pack of 3

L100
 Boring Bar with Holder

L101
 Boring Bar with Holder

L102
 Boring Bar with Holder



L104
 Boring Bar with Holder

L006A
 Boring Bar Set - HSS

L431
 Boring Bar Set - Carbide Insert

L430
 Boring Bar Set - Carbide Insert



Product Brochure For L103

sales@machineryhouse.com.au
www.machineryhouse.com.au

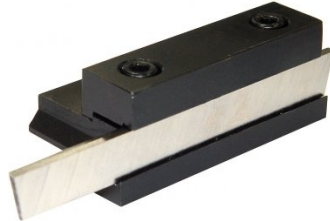
L073

Parting Tool Holder - Suits 1/2"
HSS Tool Bit



L074

Parting Tool Holder - Suits 1/2"
HSS Tool Bit



L070L

Left Hand Lathe Turning Tool
Holder - American Style



L070R

Right Hand Lathe Turning Tool
Holder - American Style



L070S

Straight Lathe Turning Tool
Holder - American Style

