

Product Brochure For L102

## L102 - Boring Bar with Holder

1/4"  
 HSS bit not included

<b>Ex GST</b>	<b>Inc GST</b>
<b>\$25.00</b>	<b>\$27.50</b>

ORDER CODE:	L102
B:	3/4"
D:	9/16"
L:	6-3/4"
L1:	3"
Toolbit Required:	1/4" (L0003)
Nett Weight (kg):	0.38



### Description

NOTE: HSS Tool bits not supplied  
 Use 1/4" HSS Tool Bit (L0003)

### Features

- Double-ended bars with 45° and 90° angular square holes at either end
- Accurately broached square holes to accept standard high speed steel or carbide tool bits
- Supplied fitted with screws and allen key

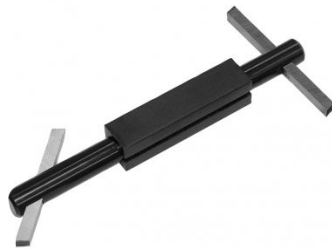
Product Brochure For L102

**Recommended Accessories**

**L0003**  
 High Speed Steel Bits - Pack of 3



**L100**  
 Boring Bar with Holder



**L101**  
 Boring Bar with Holder



**L103**  
 Boring Bar with Holder



**L104**  
 Boring Bar with Holder



**L006A**  
 Boring Bar Set - HSS



**L431**  
 Boring Bar Set - Carbide Insert



**L430**  
 Boring Bar Set - Carbide Insert



Product Brochure For L102

sales@machineryhouse.com.au  
www.machineryhouse.com.au

L073

Parting Tool Holder - Suits 1/2"  
HSS Tool Bit



L074

Parting Tool Holder - Suits 1/2"  
HSS Tool Bit



L070L

Left Hand Lathe Turning Tool  
Holder - American Style



L070R

Right Hand Lathe Turning Tool  
Holder - American Style



L070S

Straight Lathe Turning Tool  
Holder - American Style

