

L100 - Boring Bar with Holder

1/8"
 HSS bit not included

Ex GST
\$20.00

Inc GST
\$22.00



| | |
|-------------------|--------------|
| ORDER CODE: | L100 |
| B: | 1/2" |
| D: | 3/8" |
| L: | 4-1/2" |
| L1: | 2-1/8" |
| Toolbit Required: | 1/8" (L0001) |
| Nett Weight (kg): | 0.14 |



Description

NOTE: HSS Tool bits not supplied
 Use 1/8" HSS Tool Bit (L0001)

Features

- Double-ended bars with 45° and 90° angular square holes at either end
- Accurately broached square holes to accept standard high speed steel or carbide tool bits
- Supplied fitted with screws and allen key

Product Brochure For L100

Recommended Accessories

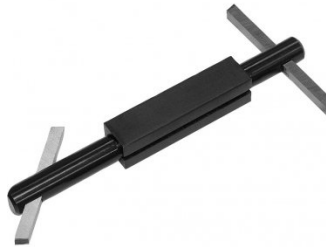
L0001
 High Speed Steel Bits - Pack of 3



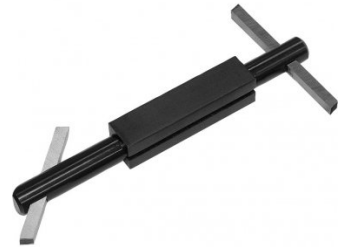
L101
 Boring Bar with Holder



L102
 Boring Bar with Holder



L103
 Boring Bar with Holder



L104
 Boring Bar with Holder



L006A
 Boring Bar Set - HSS



L431
 Boring Bar Set - Carbide Insert



L430
 Boring Bar Set - Carbide Insert



Product Brochure For L100

sales@machineryhouse.com.au
www.machineryhouse.com.au

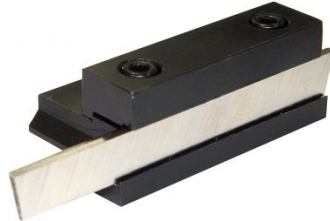
L073

Parting Tool Holder - Suits 1/2"
HSS Tool Bit



L074

Parting Tool Holder - Suits 1/2"
HSS Tool Bit



L070L

Left Hand Lathe Turning Tool
Holder - American Style



L070R

Right Hand Lathe Turning Tool
Holder - American Style



L070S

Straight Lathe Turning Tool
Holder - American Style

