

VK-6 - Vertex K-Type Milling Vice

152mm Jaw Width
 112mm Jaw Opening



Save now

Ex GST
\$310.00

Inc GST
\$341.00

ORDER CODE:	V106
MODEL:	VK-6
E - Jaw Width (mm):	152
R - Jaw Opening (mm):	112
h1 - Jaw Depth (mm):	40
A (mm):	421
B (mm):	160
H (mm):	105
S (mm):	462
a (mm):	245
b (mm):	175
h2 (mm):	40
g1 (mm):	16
g2 (mm):	16
Nett Weight (kg):	30



Features

- Jaws hardened and ground alloy steel
- All working surfaces, such as top and bottom of bed, jaw plates and base, are precision ground square and parallel
- Bearing portion of the acme-threaded leadscrew is ground for accurate alignment
- Graduated swivel base with large, easy-to-read divisions

Specific Features



Rear View



Shown without Handle

Recommended Accessories

V0532

Aluminium Magnetic Soft Jaws



V0539

Aluminium Magnetic Soft Jaws



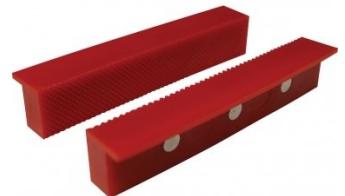
V0536

Aluminium Magnetic Soft Jaws



V0542

Plastic Magnetic Soft Jaws



V0546

Plastic Magnetic Soft Jaws

