

Product Brochure For S927

HG-840B - Hydraulic NC Guillotine

2500 x 4mm Mild Steel Shearing Capacity
 1-Axis Ezy-Set NC-89 Controlled Backgauge & Includes Rapid Blade Adjustment

Back In Stock Soon

Ex GST **Inc GST**
\$17,450.00 **\$19,195.00**



ORDER CODE:	S927
MODEL:	HG-840B
Shearing Capacity - Mild Steel (mm):	4
Shearing Capacity - Stainless Steel (mm):	2.5
Shearing Length (mm):	2500
NC Control (Type):	Ezy-Set NC-89
Backgauge (Type):	Leadscrew
Backgauge Travel (mm):	700
Pneumatic Sheet Supports:	~
Quick Action Blade Clearance Adjustment:	Yes
Strokes / min (SPM):	12
Blade Angle (deg):	2°
Throat Depth (mm):	~
Motor Power (kW / hp):	5.5 / 7.5
Voltage / Amperage (V / amp):	415
Floor Space Requirements (L x W x H) (mm):	
Nett Weight (kg):	2750



Features

- 2500mm x 4mm cutting capacity
 - 5.5kW / 7.5hp 415V motor
 - Ezy-Set NC-89 Go-To digital display controlled backgauge with DRO counter
 - Quick action blade clearance adjustment for shearing material 1 - 4mm
 - Hydraulic material clamping for accurate shearing
 - One shot lubrication pump & reservoir for slideway protection
 - Roving foot pedal control
 - Clamp beam design allows clear view to shadow line on material
 - Blades made from 9CrSi material suitable for cutting stainless steel
 - Transfer balls inserted into work table allowing larger sheets to be easily positioned to the cut position and squaring arm.
 - Front sheet supports with ball bearing guides preventing material damage when setting up
 - Safety three photo electric light beams on rear guarding
 - Safety reset rear guarding button mounted to back of electrical box
 - Heavy duty under driven machine construction
 - Equipped with shadow line lighting-alignment device
 - Mild steel capacity is rated on hot rolled material with 250MPA
- Pre-Commissioning:
 1. Guillotine is run & tested prior delivery
 2. Hydraulic oil is included with machine

Product Brochure For S927

Specific Features



Right View



Front View



NC 89 Control Panel



NC 89 Backgauge DRO



Quick Action Blade Clearance Adjustment Operation



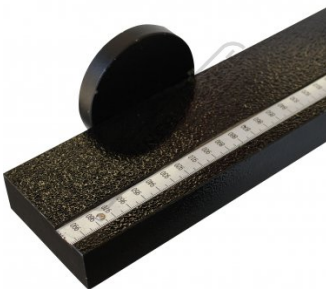
Quick Action Blade Clearance Adjustment Swivel Handle



Quick Action Blade Clearance Adjustment



Squaring Arm



Squaring Arm with Measuring Scale



Front Sheet Supports



Front Sheet Supports with Roller Bearings



Material Transfer Ball On the Table



3 Safety Photo Sensors



Safety Omron E3ZS Rear Light Sensor Guarding



NC 89 Control Backgauge



One Shot Lubrication

Product Brochure For S927



Micro Switches



Back Gauge Drive Motor



Rear Guard Reset Button



Emergency Stop Switch



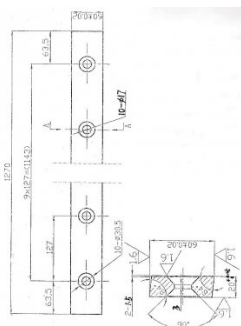
Mobile Foot Control



Shown with Optional Ball Transfer Tables - Order Code (L840)

Recommended Accessories

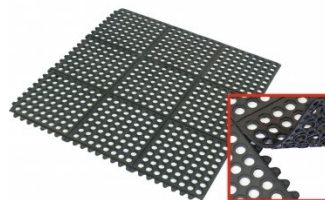
S9982
 2540mm Sheet Metal Guillotine
 Blade Set - 9CrSi



M800
 Rubber Mat - Anti-Fatigue



M805
 Rubber Mat - Anti-Fatigue



O000
 SpillFix Universal Organic
 Absorbent



Product Brochure For S927

O000A
 Natural Zeolite Absorbent



O043
 Rust & Corrosion Preventive -
 Penetrant & Lubrication



O042
 General Purpose Lubricant &
 Corrosion Inhibitor



O040
 Rust & Corrosion Preventive -
 Penetrant & Lubrication



O044
 Rust & Corrosion Preventive -
 Penetrant & Lubrication



O004
 Superdraulic 46 Hydraulic Oil

