

Product Brochure For S991F

TP86-150.3200 - 86° Top Punch Pressbrake Tooling

150mm High x 3200mm Long
 Suits MetalMaster, Amada & European Pressbrakes

Back In Stock Soon

Ex GST	Inc GST
\$2,500.00	\$2,750.00

Order Code:	S991F
Model:	TP86-150.3200
Type:	86° Top Punch
Size (mm):	150 x 3200



Description

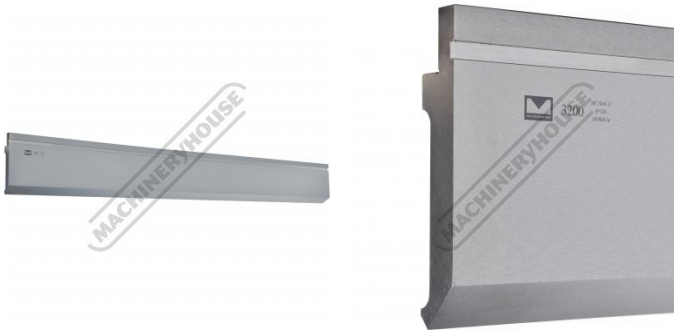
Precision Pressbrake Punch made from chromium-molybdenum high strength steel and heat treated for long term durability.

Nose Angle - 86 Degrees
 Nose Radius - 0.5mm
 Total Height - 150mm
 Shoulder height - 120mm
 Max. Tonnage - 1000kN/m
 Length - 3200mm

Suits MetalMaster, Amada & European Pressbrakes

Product Brochure For S991F

Specific Features



S991F

Measurements

Recommended Accessories

S906G
 Hydraulic NC Pressbrake

S906GL
 Hydraulic NC Pressbrake

S908G
 Hydraulic NC Pressbrake

S908GL
 Hydraulic NC Pressbrake



S909G
 Hydraulic NC Pressbrake

S909GL
 Hydraulic NC Pressbrake

S910G
 Hydraulic NC Pressbrake

S910GL
 Hydraulic NC Pressbrake



Product Brochure For S991F

sales@machineryhouse.com.au
www.machineryhouse.com.au

S912G

Hydraulic NC Pressbrake

