

Product Brochure For K234

## RSS-4WS - Industrial Steel Shelving Plus 2 Drawer Unit Package Deal

364kg Shelf Load Capacity  
 1955 x 610 x 1830mm



**Package Deal**

**Ex GST**                      **Inc GST**  
**\$390.00**                      **\$429.00**

**Package Contents - SAVE \$22.00 (Inc)**

**1 x S014 - RSS-4WS Industrial Steel Shelving**                      **\$352.00**  
**1 x S014D - RSS-2D 2 x Drawer System - Suits Industrial Steel Shelving**                      **\$99.00**

**Normal Price (Inc):**                      **\$451.00**

ORDER CODE:	K234
MODEL:	RSS-4WS + RSS-2D Package
Type:	Industrial Steel Shelving + & 2 Drawer Unit
Drawer Load Capacity (kg):	30
Shelf Load Capacity (kg):	364
Total Combined Load Capacity (kg):	~
Parts Bin Load Capacity Each (kg):	~
Buckets / Bins Total Quantity (No.):	~
Buckets / Bins Dividers Quantity (No.):	~
Maximum Total Load Capacity (kg):	~
Buckets / Bins A: Quantity / Size (mm):	~
Buckets / Bins B: Quantity / Size (mm):	~
Buckets / Bins C: Quantity / Size (mm):	~
Buckets / Bins D: Quantity / Size (mm):	~
Dimensions (L x W x H) (mm):	1955 x 610 x 1830
Nett Weight (kg):	66.5

### Description

Industrial steel shelving which is supplied in bays 1955mm (L) x 610mm (W) x 1830mm (H) with a silver corrosive resistant powder coated finish.

Each bay consists of four levels with wire mesh inserts, each shelf has a capacity of 364kg. The vertical posts have provision to adapt an optional racking extensions (S014A) to double the storage. The shelf rails are secured in position and locked in via a wedge system. Simply very easy to assemble without the use of any tools.

### Features

- RSS-4WS - Industrial Steel Shelving - (S014)
- 364kg capacity per shelf
- Industrial 4 shelves with reinforced steel wire grid pattern mesh
- Adjustable shelf height position with interlocking tabs
- Silver corrosive resistant powder coated finish
- Vertical posts have double sided punched holes to connect optional extension bay
- Vertical posts are 64 x 38 x 1.6mm heavy duty C-section
- Cross member supports for wire mesh are 70 x 18 x 1.6mm heavy duty C-section
- Strengthening side supports are 40 x 18 x 1.4mm C-section
- 1955 x 610 x 1830mm (LxWxH) assembled dimensions
- RSS-2D - 2 x Drawer System - Suits Industrial Steel Shelving - (S014D)
- 2 x 412 x 540 x 110mm drawers - (WxDxH)
- 880mm total width drawer system
- 30kg load capacity per drawer
- Ball bearing slides with de-tent lock
- Particle board drawer base
- Flush mounted drawer handles

**Specific Features**



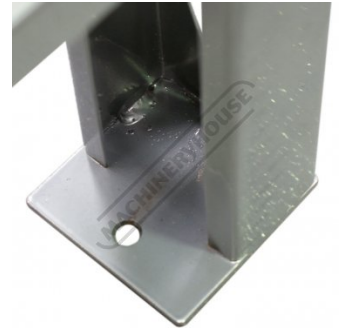
External Shelf Locking System



Internal Shelf Locking Wedge Type System



Shelf Wire Mesh



Foot Post with Bolt Down Provisions



Drawer



Shown Mounted to Racking with Drawers Closed



Shown with Drawers Closed



Ball Bearing Slides



Shown Mounted to Racking with Drawer Open

Product Brochure For K234

**Recommended Accessories**

**S014A**  
 Industrial Steel Shelving  
 Extension



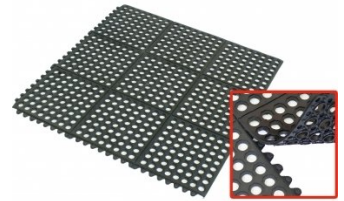
**S014D**  
 2 x Drawer System - Suits  
 Industrial Steel Shelving



**M800**  
 Rubber Mat - Anti-Fatigue



**M805**  
 Rubber Mat - Anti-Fatigue



**A380**  
 Steel Work Bench - 3 x Lockable  
 Drawers



**T690**  
 Workshop Series Tool Chest



**T695**  
 Workshop Series Roller Cabinet



**T720**  
 Industrial Series Tool Chest



Product Brochure For K234

**T724**  
 Industrial Series Roller Cabinet



**T726**  
 Industrial Series Side Locker



**A420**  
 Industrial Work Bench



**A426**  
 Industrial Backing Panel - Bench Mount



**T774**  
 Industrial Storage Cabinet



**T775**  
 Industrial Tooling Cabinet



**T762**  
 Industrial Storage Cupboard



**T764**  
 Industrial Tooling Cabinet



**T670**  
 Platform Trolley - 300kg  
 Capacity



**T672**  
 Platform Trolley - 300kg  
 Capacity

