

Product Brochure For K232

RSS-4WS - Industrial Steel Shelving Plus Extension Package Deal

364kg Shelf Load Capacity
 3878 x 610 x 1830mm

Package Deal

Ex GST	Inc GST
\$590.00	\$649.00

Package Contents - SAVE \$33.00 (Inc)	
1 x S014 - RSS-4WS Industrial Steel Shelving	\$352.00
1 x S014A - RSS-4WSA Industrial Steel Shelving Extension	\$330.00
Normal Price (Inc):	\$682.00



ORDER CODE:	K232
MODEL:	RSS-4WS + RSS-4WSA Package
Type:	Industrial Steel Shelving
Drawer Load Capacity (kg):	~
Shelf Load Capacity (kg):	364
Total Combined Load Capacity (kg):	~
Parts Bin Load Capacity Each (kg):	~
Buckets / Bins Total Quantity (No.):	~
Buckets / Bins Dividers Quantity (No.):	~
Maximum Total Load Capacity (kg):	~
Buckets / Bins A: Quantity / Size (mm):	~
Buckets / Bins B: Quantity / Size (mm):	~
Buckets / Bins C: Quantity / Size (mm):	~
Buckets / Bins D: Quantity / Size (mm):	~
Dimensions (L x W x H) (mm):	3878 x 610 x 1830
Nett Weight (kg):	103



Description

Industrial steel shelving which is supplied in bays 1955mm (L) x 610mm (W) x 1830mm (H) with a silver corrosive resistant powder coated finish.

Each bay consists of four levels with wire mesh inserts, each shelf has a capacity of 364kg. The vertical posts have provision to adapt an optional racking extensions (S014A) to double the storage. The shelf rails are secured in position and locked in via a wedge system. Simply very easy to assemble without the use of any tools.

Features

- RSS-4WS - Industrial Steel Shelving - (S014)
- 364kg capacity per shelf
- Industrial 4 shelves with reinforced steel wire grid pattern mesh
- Adjustable shelf height position with interlocking tabs
- Silver corrosive resistant powder coated finish
- Vertical posts have double sided punched holes to connect optional extension bay
- Vertical posts are 64 x 38 x 1.6mm heavy duty C-section
- Cross member supports for wire mesh are 70 x 18 x 1.6mm heavy duty C-section
- Strengthening side supports are 40 x 18 x 1.4mm C-section
- 1955 x 610 x 1830mm (LxWxH) assembled dimensions

- RSS-4WSA - Industrial Steel Shelving Extension - (S014A)
- 364kg per shelf capacity when attached to RSS-4WS shelving
- Industrial 4 shelves with reinforced steel wire grid pattern mesh
- Adjustable shelf height position with interlocking tabs
- Silver corrosive resistant powder coated finish
- Vertical post has double sided punched holes to connect optional extension bay
- Vertical post is 64 x 38 x 1.6mm heavy duty C-section
- Cross member supports for wire mesh are 70 x 18 x 1.6mm heavy duty C-section
- Strengthening side supports are 40 x 18 x 1.4mm C-section
- 1923 x 610 x 1830mm (LxWxH) assembled dimensions

Product Brochure For K232

Specific Features



RSS-4WS Industrial Shelving



RSS-4WSA - Industrial Steel Shelving Extension



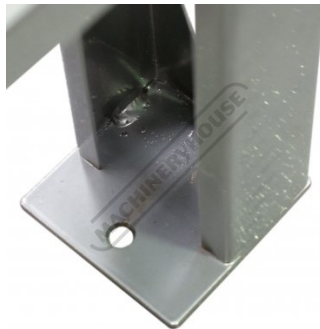
External Shelf Locking System



Internal Shelf Locking Wedge Type System



Shelf Wire Mesh



Foot Post with Bolt Down Provisions

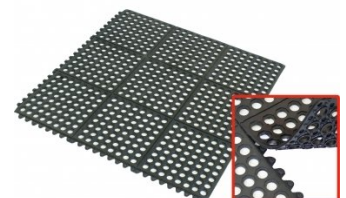
Recommended Accessories

S014A
 Industrial Steel Shelving
 Extension

S014D
 2 x Drawer System - Suits
 Industrial Steel Shelving

M800
 Rubber Mat - Anti-Fatigue

M805
 Rubber Mat - Anti-Fatigue



Product Brochure For K232

A380
 Steel Work Bench - 3 x Lockable
 Drawers



T690
 Workshop Series Tool Chest



T695
 Workshop Series Roller Cabinet



T720
 Industrial Series Tool Chest



T724
 Industrial Series Roller Cabinet



T726
 Industrial Series Side Locker



A420
 Industrial Work Bench



A426
 Industrial Backing Panel - Bench
 Mount



T774
 Industrial Storage Cabinet



T775
 Industrial Tooling Cabinet



T762
 Industrial Storage Cupboard



T764
 Industrial Tooling Cabinet



Product Brochure For K232

sales@machineryhouse.com.au
www.machineryhouse.com.au

T670

Platform Trolley - 300kg
Capacity

T672

Platform Trolley - 300kg
Capacity

