

T60125 - BuildPro Heavy Duty Riser Block

5 Faces
 100 x 100 x 200mm

Ex GST
\$200.00

Inc GST
\$220.00



ORDER CODE:	W08095
MODEL:	T60125
Type:	BuildPro - 5 Face & Heavy Duty Riser Block
Table Height with Stand (mm):	~
Suits Table Size:	~
Material Finish:	~
Clamping Capacity:	~
Locking Handle - Pivot Movement:	~
Clamp Bar - Pivot Movement:	~
Plunger Travel (mm):	~
Throat Depth (mm):	~
Opening (mm):	~
Size:	100 x 100 x 200mm
Quantity Per Pack (No.):	~
Thread:	~
Number of Holes (No.):	~
Slot Length (mm):	2 Slots
Magnet Clamp Angle (deg):	~
Pull Force (kg):	~
Clamping Force (kg):	~
Suits:	~
Over all Length:	~
Nett Weight (kg):	5.67

BuildPro™



Description

These five face precision machined Riser Blocks feature accurate bored holes in a diagonal pattern.

Use Riser Blocks individually, or stacked, to elevate a workpiece or clamp. Cross join the Blocks for use as a beam. Use the Blocks to mount a BuildPro® plate to the side or end of the table, or to join tables together.

NEW! Models T60120, T60125, and T60130 feature two slots at one end for adjustable positioning.

- The versatile, five-sided Riser Block functions as a heavy duty "building block" to elevate clamps and workpieces.
- Right Angle Brackets can be mounted to the Riser Blocks to hold stock at varying heights.
- Riser Block used to mount BuildPro® plate in vertical position.
- Table Mount C-Clamps can be mounted to the Riser Blocks for push down clamping for taller workpieces.

The very practical, modular design of the BuildPro® Table makes it easy to set-up and tear down for job at hand, big or small. Save time and money by holding, positioning and locating quickly and easily with a wide variety of BuildPro® clamps and accessories.

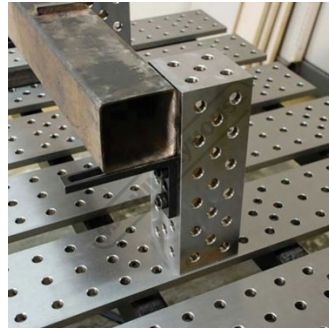
All BuildPro® Tables have 16mm thick steel plate with Ø16mm holes in a 50mm grid pattern. All tables, except BuildPro® MAX, have 40mm slots between plates.

Product Brochure For W08095

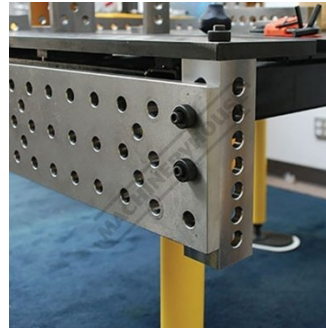
Specific Features



Functions as a Heavy Duty Building Block to Elevate Clamps and Workpieces



Right Angle Brackets can be Mounted to the Riser Blocks to Hold at Varying Heights



Riser Block Used to Mount BuildPro Plate in Vertical Position

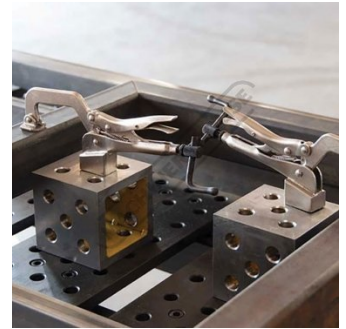
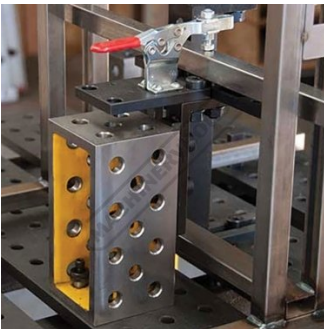


Table Mount C Clamps can be Mounted to the Riser Blocks for Push Down Clamping for Taller Workpieces



Riser Blocks Used for Many Versatile Applications

Recommended Accessories

W08100
 BuildPro Economy Stop & Clamping Square



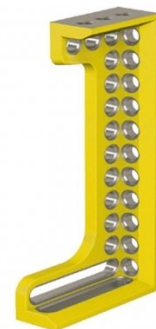
W08101
 BuildPro Economy Stop & Clamping Square



W08102
 BuildPro Economy Stop & Clamping Square



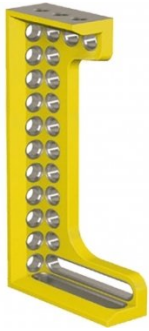
W08111
 BuildPro Malleable Cast Iron Clamping Square



Product Brochure For W08095

W08110

BuildPro Malleable Cast Iron Clamping Square



W08092

BuildPro Heavy Duty Riser Block



W08096

BuildPro Heavy Duty Riser Block



W08042

BuildPro Ball Lock Bolt



W08043

BuildPro Ball Lock Bolt



Packet of 10

W08048

BuildPro Ball Lock Bolt



W08049

BuildPro Ball Lock Bolt



Packet of 10

W07906

BuildPro Inserta T-Handle Clamp



W07908

BuildPro Inserta T-Handle Clamp



W07910

BuildPro Inserta Clamp



W08010

BuildPro V-Block



W08014

BuildPro V-Block



Product Brochure For W08095

sales@machineryhouse.com.au
www.machineryhouse.com.au

W08016

BuildPro Aluminium V-Block

W08012

BuildPro V-Block Spacer

