

Product Brochure For V306

VA-6 - Vertex Anglock Machine Vice

152mm Jaw Width
 142mm Jaw Opening

Ex GST
\$490.00

Inc GST
\$539.00



ORDER CODE:	V306
MODEL:	VA-6
A - Jaw Width (mm):	152
F - Jaw Opening (mm):	142
E - Jaw Depth (mm):	46
B (mm):	425
C (mm):	209
D (mm):	149
G (mm):	300
H (mm):	38
Nett Weight (kg):	45



Description

The VERTEX Anglock vice has a ductile steel body with hardened and ground movable steel jaw.

Features

- All surfaces are precision ground and the bed is flame hardened
- Spherical segment allows for all directional alignment
- When clamping, a downward pressure of 1kg is exerted by the movable jaw for every 2kg of clamping pressure, preventing the work piece from tilting
- Bearing thrust collar cuts friction and increases clamping pressure
- Swivel base is graduated to 360°

Product Brochure For V306

sales@machineryhouse.com.au
www.machineryhouse.com.au

Recommended Accessories

V0532

Aluminium Magnetic Soft Jaws

V0539

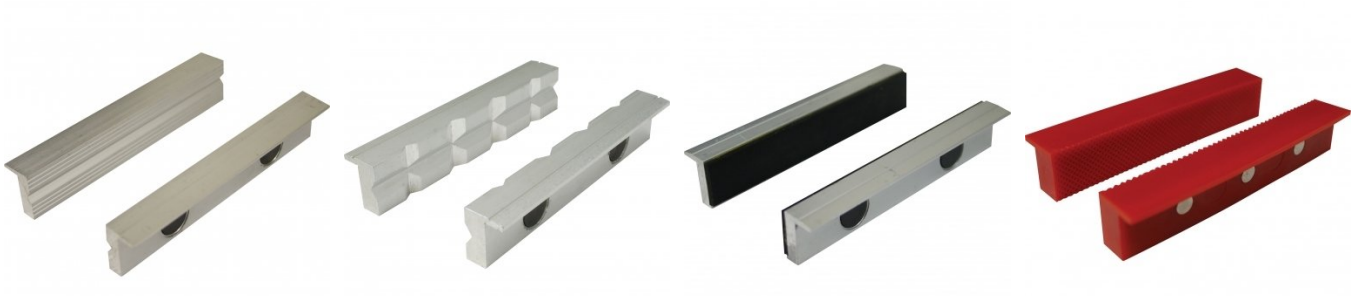
Aluminium Magnetic Soft Jaws

V0536

Aluminium Magnetic Soft Jaws

V0542

Plastic Magnetic Soft Jaws



V0546

Plastic Magnetic Soft Jaws

