

WNMG 080408-MS - KYOCERA Carbide Inserts - Turning

Grade CA6525 - Stainless Steel
 10 Inserts Per Pack

Ex GST
\$121.00

Inc GST
\$133.10



ORDER CODE:	L0538
MODEL:	WNMG 080408-MS
Grade:	CA6525
Application:	Stainless Steel
Pieces in Set (No.):	10
l (mm):	8.7
d (mm):	12.7
t (mm):	4.76
R (mm):	0.8
D1 (Hole Ø) (mm):	5.16

KYOCERA
 JAPANESE CARBIDE



Description

KYOCERA INDEXABLE CARBIDE INSERTS - Stainless Steel grade
 MS - Chipbreaker

Features

- KYOCERA GRADE CA6525 - Application first choice for general cutting of stainless steel from finishing to roughing continuous to interruption cutting.
- 10 Inserts Per Pack

Specific Features



Tip

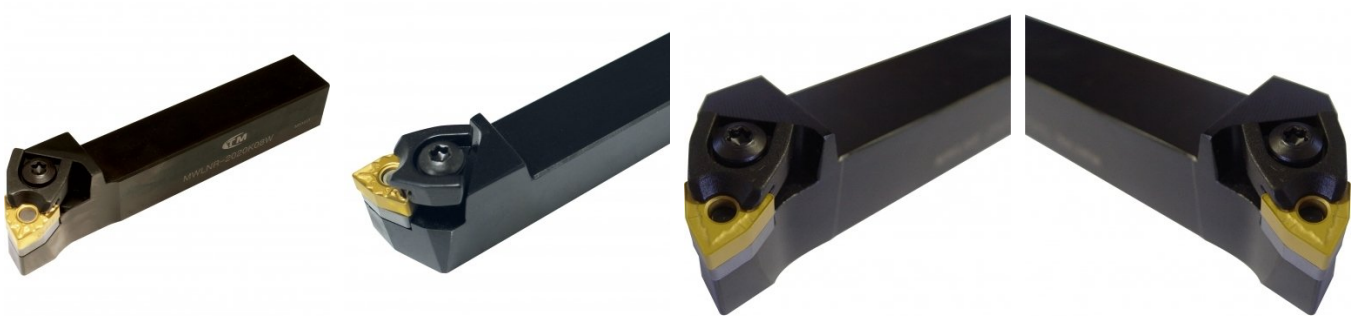
Recommended Accessories

L039
 Right Hand Turning Tool Holder

L040
 Left Hand Turning Tool Holder

L041
 Right Hand Turning Tool Holder

L042
 Left Hand Turning Tool Holder



L415
 Right Hand Boring Bar

L416
 Right Hand Boring Bar

