

## WNMG 080404-HQ - KYOCERA Carbide Inserts - Turning

Grade CA515 - Finishing Steel  
 10 Inserts Per Pack

**Ex GST**  
**\$121.00**

**Inc GST**  
**\$133.10**

ORDER CODE:	L0534
MODEL:	WNMG 080404-HQ
Grade:	CA515
Application:	Finishing Steel
Pieces in Set (No.):	10
l (mm):	8.7
d (mm):	12.7
t (mm):	4.76
R (mm):	0.4
D1 (Hole Ø) (mm):	5.16



**KYOCERA**  
 JAPANESE CARBIDE



### Description

KYOCERA INDEXABLE CARBIDE INSERTS - Steel finish grade  
 HQ - Chipbreaker

### Features

- KYOCERA GRADE CA515 - High speed finishing of steel. Continuous to light interruption
- 10 Inserts Per Pack

**Specific Features**



Tip

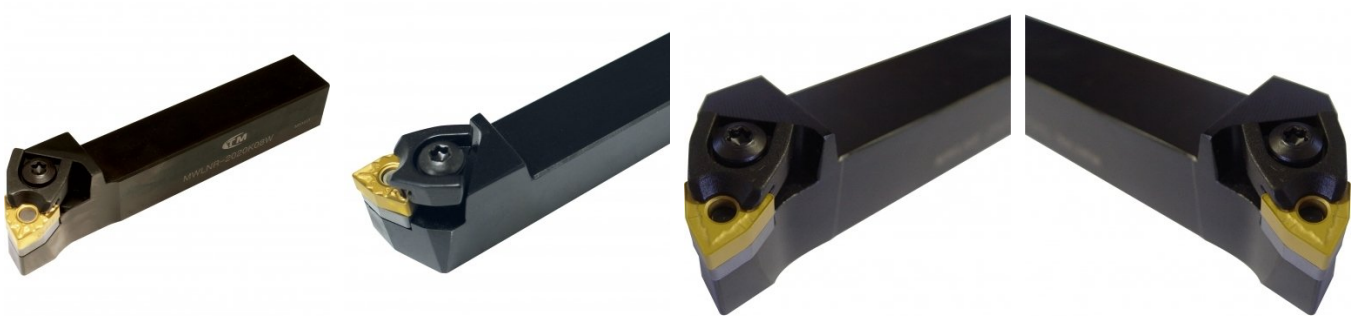
**Recommended Accessories**

L039  
Right Hand Turning Tool Holder

L040  
Left Hand Turning Tool Holder

L041  
Right Hand Turning Tool Holder

L042  
Left Hand Turning Tool Holder



L415  
Right Hand Boring Bar

L416  
Right Hand Boring Bar

