

Product Brochure For C205

## K11 SERIES - 3 Jaw Self Centring Lathe Chuck

Ø200mm  
 Back Plate Mount

**Ex GST**  
**\$240.00**

**Inc GST**  
**\$264.00**



ORDER CODE:	C205
Mounting Type:	Back Plate Mount
Chuck Size (mm):	Ø200
Outside Jaw (mm):	4 - 85
Inside Jaw (mm):	65 - 200
Speed (rpm):	2000
D1 (mm):	165
D2 (mm):	180
D3 (bore) (mm):	65
H (mm):	109
H1 (mm):	75
H2 (mm):	~
h (lowercase) (mm):	5
z-d (mm):	3 x M10
Nett Weight (kg):	16.5



### Description

K11 Series cast iron body lathe chucks are built to GB/T 4346.2-2002 standard, and supplied with one piece standard and reverse jaws.

World-class and industry leader in manufacturing manual lathe chucks for over 30 years. ToolMaster precision tolerance lathe chucks are ISO 9001-2000 approved, and ensure high quality with accuracy testing on every chuck.

### Includes

- Outside jaws
- Inside jaws
- Mounting screws
- Chuck key

Product Brochure For C205

**Specific Features**



Rear View



Parts



Front View

**Recommended Accessories**

C7651  
 Soft Jaw & Base Set

L287  
 D1-4 Camlock Back Plate

L2875  
 D1-5 Camlock Back Plate

A358  
 Sky Hook Lifting Device

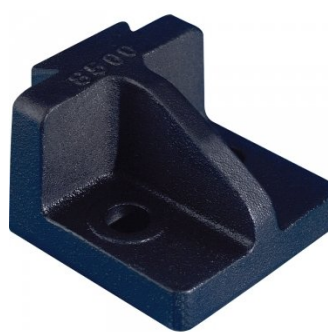


A358A  
 Chuck Hook

A358B  
 Choker Collar

A358C  
 Bolt Down Adaptor

C2864  
 Chuck Key



Product Brochure For C205

[sales@machineryhouse.com.au](mailto:sales@machineryhouse.com.au)  
[www.machineryhouse.com.au](http://www.machineryhouse.com.au)

M055

Magnetic Base and Dial  
Indicator

