

WNMG 080408-PS - KYOCERA Carbide Inserts - Turning

Grade CA525 - General Purpose Steel
 10 Inserts Per Pack

Ex GST
\$121.00

Inc GST
\$133.10



ORDER CODE:	L053
MODEL:	WNMG 080408-PS
Grade:	CA525
Application:	General Purpose Steel
Pieces in Set (No.):	10
l (mm):	8.7
d (mm):	12.7
t (mm):	4.76
R (mm):	0.8
D1 (Hole Ø) (mm):	5.16

KYOCERA
 JAPANESE CARBIDE



Description

KYOCERA INDEXABLE CARBIDE INSERTS - General purpose grade
 PS - Chipbreaker

Features

- KYOCERA GRADE CA525 - Rough to interruption cutting of steel. Good wear resistance (Coated)
- 10 Inserts Per Pack

Product Brochure For L053

CVD Coated Carbide

KYOCERA's CVD coated carbide grades are based on ceramic thin film technology and provide stable efficient cutting at high speeds or heavy interrupted applications.

Features:

- Applicable from low to high speed cutting & from finishing to roughing
- Stable cutting is achieved due to the superior toughness & crack resistance
- Cutting times are reduced due to good chip control from effective chip breakers

STEEL - Application Chart

Grade Selection	Application			
	Continuous	Light Interruption	Interruption	Heavy Interruption
P15		Light interruption, Stable	CA515	
P25			Interruption, General purpose	CA525
P35			Heavy interruption, High feed	CA535

Chipbreaker Design

Design		Application
Medium-Roughing	<p>PS</p>	<p>General purpose with wide application range. More stable due to large contact surface.</p>

Design		Application
Finishing - Medium	<p>HQ</p>	<p>Sharp cutting performance and wide range chip control with 3-D rake angle and double projection design.</p>

Specific Features



Tip

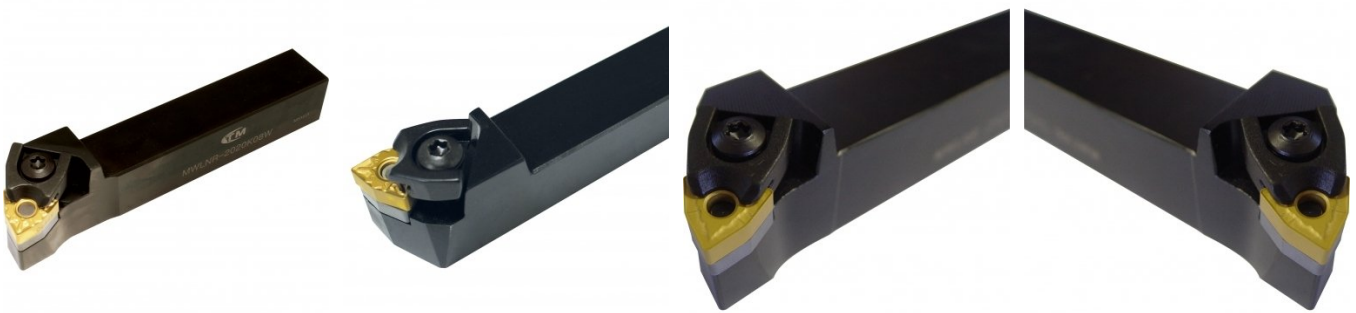
Recommended Accessories

L039
 Right Hand Turning Tool Holder

L040
 Left Hand Turning Tool Holder

L041
 Right Hand Turning Tool Holder

L042
 Left Hand Turning Tool Holder



L415
 Right Hand Boring Bar

L416
 Right Hand Boring Bar

L452
 Lathe Turning Tool Kit - 3 piece
 Insert Type

L453
 Lathe Turning Tool Kit - 3 piece
 Insert Type

