

Product Brochure For C7106

## PS3-250/D1-6 - 3 Jaw Self Centring Lathe Chuck

Ø250mm  
 D1-6 Camlock Mount

**Ex GST**  
**\$990.00**

**Inc GST**  
**\$1,089.00**



|                   |          |
|-------------------|----------|
| ORDER CODE:       | C7106    |
| Chuck Size (mm):  | Ø250     |
| Camlock:          | D1-6     |
| Outside Jaw (mm): | 5 - 118  |
| Inside Jaw (mm):  | 77 - 250 |
| Speed (rpm):      | 2000     |
| D1 (mm):          | 106.3    |
| D2 (mm):          | 133.4    |
| D3 (mm):          | 76       |
| H (mm):           | 143.5    |
| H1 (mm):          | 103.5    |
| h (mm):           | 16       |
| Nett Weight (kg): | 40       |

*gator chucks*



### Description

PS Series semi steel body lathe chucks are supplied with one piece standard and reverse jaws.

Gator is a world class state of the art producer of manual lathe chucks with over 30 years of manufacturing experience and production excellence. Gator chucks are manufacturing to DIN 55029 standard and built to last for precision machining applications. The state of the art, ISO 9001-2000 manufacturing facility is quality focused producing chucks for the worldwide market.

The PS Series lathe chucks are available in direct mount or back plate mount.

### Features

- Comprehensive quality assurance and accuracy testing ensure standards remain high
- Each chuck is supplied with a set of inside and outside jaws and a chuck key
- All bearing surfaces are precisely machined
- Scroll plate is drop forged from fine alloy steel and finished with case hardening
- Jaw teeth, guideways & pinions are hardened & ground

### Includes

- Outside jaws
- Inside jaws
- Chuck key

Product Brochure For C7106

**Specific Features**



Front View



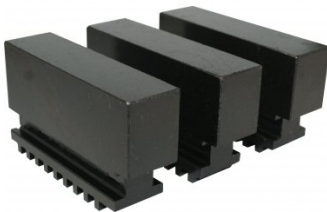
Camlock Mount



Included Accessories

**Recommended Accessories**

C754  
Soft Jaw Set



A358  
Sky Hook Lifting Device



A358A  
Chuck Hook



A358B  
Choker Collar



A358C  
Bolt Down Adaptor

