

Product Brochure For L0512

A2022N00CR02 - KENNAMETAL Carbide Inserts - Parting

2.2 x 11mm Grade KC5025 General Purpose
 10 Inserts Per Pack

Ex GST
\$109.00

Inc GST
\$119.90

ORDER CODE:	L0512
ISO:	A2022N00CR02
Grade:	K5025
Length (mm):	11
S (mm):	2.2
D (deg):	7.6°



Features

- KC5025- Coated grade: Suitable for heavy machining, particular suitable when turning Austenitic stainless steels. Reduces build up on the cutting edge
- 10 Inserts Per Pack

Grade and Speed Recommendations - sfm (m/min)

workpiece material	first choice for general machining conditions
steel	KC5025 265 - 560 (80 - 170)
stainless steel	KC5025 265 - 500 (80 - 150)
cast iron	KC5025 230 - 500 (70 - 150)
non-ferrous	KC5025 500 - 980 (150 - 300)
high-temp alloys	KC5025 80 - 250 (25 - 75)
hardened material	KD081* 265 - 400 (80 - 120)

Chipbreaker Design

-CR
Cutoff Rough

• cutoff insert with precision molded cutting edge for higher feed rates
 • curved cutting edge

Feed Rate: 0.08 - 0.3 mm/rev)
 0.003 - 0.012 in/rev

NOTE: Feed rate is based on mild steel and is only a guide. This may vary with different applications



Specific Features



Tip

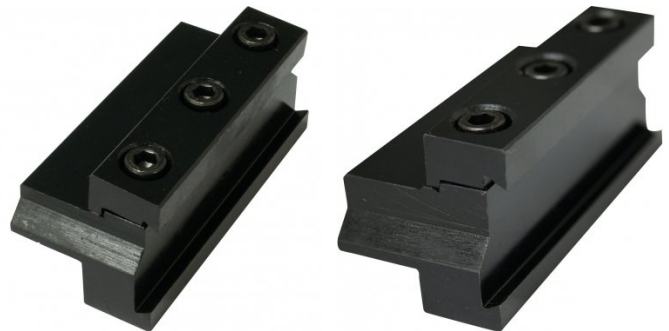
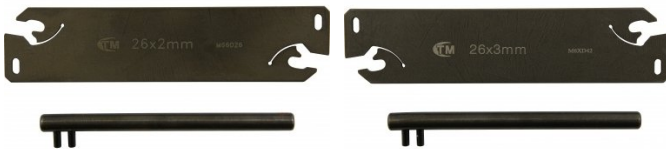
Recommended Accessories

L468
Parting Blade

L469
Parting Blade

L027
Parting Block - Suits 26mm
Blade

L028
Parting Block - Suits 26mm
Blade



L029
Parting Block - Suits 26mm
Blade

L029B
Parting Block - Suits 32mm
Blade

L030
Parting Block - Suits 32mm
Blade

L464
Professional Lathe Parting Tool
Kit - Insert Type



Product Brochure For L0512

sales@machineryhouse.com.au
www.machineryhouse.com.au

L465

Professional Lathe Parting Tool
Kit - Insert Type

